

## RECESSED MULTI PURPOSE UNIT

# MODEL 1471

Options:

1471-11 Surface Mounted



### MULTI-PURPOSE 1471

- Combination 2-in-1 unit:  
Towel and soap dispenser
- Satin finish stainless steel

Overall Dimensions  
435mm W x 324mm H x 102mm D

### CONSTRUCTION:

**FLANGE:** Fabricated of type 304 (18-8), 22 gauge stainless steel with exposed surfaces in architectural satin finish. One piece seamless construction, 25mm wide with 7mm return.

**CABINET:** Fabricated of type 304 (18-8), 26 gauge stainless steel.

**DOORS:** Fabricated of type 304 (18-8), 22 gauge stainless steel, with heavy duty full length piano hinge and tumbler lock keyed as other Bradley units.

**TOWEL DISPENSER:** Fabricated of type 304 (18-8), 22 gauge stainless steel.

**SOAP DISPENSER:** Fabricated of 304 (18-8), 22 gauge stainless steel with chrome plated brass soap valve.

### CAPACITY:

Towel Dispenser - holds Bradley Model 2001 paper hand towels.

Soap Dispenser - 1.5 litre liquid soap Bradley Model PB609.

### OPERATION:

Soap dispenser swings open for filling and cleaning. Sight gauge indicates refill time. Valve dispenses measured amount of liquid soap. Towel dispenser holds paper towels without the use of special adaptors.

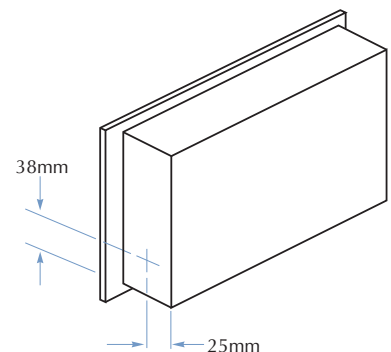
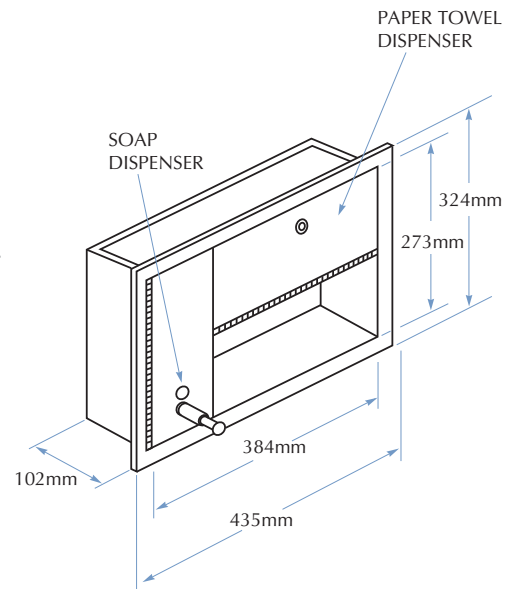
### INSTALLATION:

Recessed unit requires Rough Wall Opening 390mm W x 280mm H x 105mm D.

Secure to framing with mounting screws at holes provided.

### GUIDE SPECIFICATION:

Recessed multi-purpose unit, consisting of towel dispenser and soap dispenser, shall be fabricated of type 304 (18-8), stainless steel with exposed surfaces in satin finish. Doors with full length piano hinge and tumbler lock.



TOLL FREE 1300 364 561

The manufacturer reserves the right to make changes in design and material without formal notice and without incurring obligation.

**Bradley**  
AUSTRALIA.COM