

TOILET ROLL HOLDERS

▶ **5054 Single** ▶ **5224 Double**

- Controlled delivery
- Heavy duty chrome plated steel
- Vandal-resistant locking mechanism
- Hinged arm for filling
- Tension spring prevents free spinning of roll
- Holds one (two) standard core rolls

Overall Dimensions

Single roll: 152mm W x 70mm H x 114mm D

Double roll: 314mm W x 70mm H x 114mm D



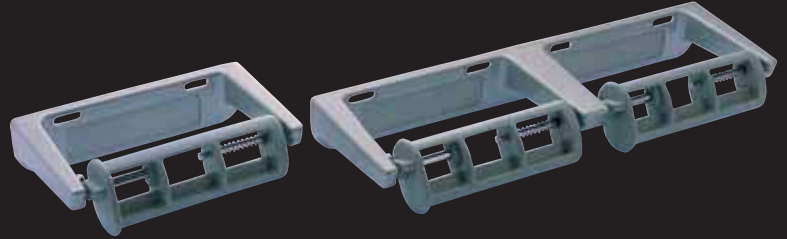
▶ **5071 Single** ▶ **5241 Double**

- Controlled delivery, rocking action
- Bracket: die-cast aluminium
- Spindle: fabricated grey polypropylene
- Vandal-resistant
- Remove tissue core to access locking mechanism for servicing
- Spindle revolves only a half turn for each dispensing operation and returns to original position
- Holds one (two) standard core roll(s)

Overall Dimensions

Single roll: 165mm W x 44mm H x 110mm D

Double roll: 330mm W x 44mm H x 110mm D



▶ **5402**

- Surface mounted dual roll toilet tissue holder
- Type 304 stainless steel in architectural satin finish
- Non-removable polyethylene spindle assemblies
- Bottom hinged front panel is secured with tumbler lock
- Holds two standard rolls

Overall Dimensions

141mm W x 264mm H x 135mm D



▶ **5442**

- Surface mounted dual roll toilet tissue holder
- Type 304 stainless steel in architectural satin finish
- Tumbler lock keyed
- Holds two standard core rolls

Overall Dimensions

115mm W x 315mm H x 128mm D

OPTION:

Model 5442-33:

white powdercoat finish



▶ **5443**

- Surface mounted triple roll toilet tissue holder
- Type 304 stainless steel in architectural satin finish
- Tumbler lock keyed
- Holds three standard rolls

Overall Dimensions

115mm W x 420mm H x 128mm D

OPTION:

Model 5443-33:

white powdercoat finish



▶ **5425**

- Double jumbo roll dispenser
- Type 304 stainless steel in architectural satin finish
- Secured with tumbler lock
- Suits jumbo toilet tissue

Overall Dimensions

520mm W x 285mm H x 150mm D

